

NATN Transfer Admission Agreement Criteria

Community college students must meet the following criteria for successful transfer admission at the junior level at the NATN partnering institutions. Admissions decisions will be governed by the receiving institution's criteria for limited access programs within the institution which may require higher GPAs.

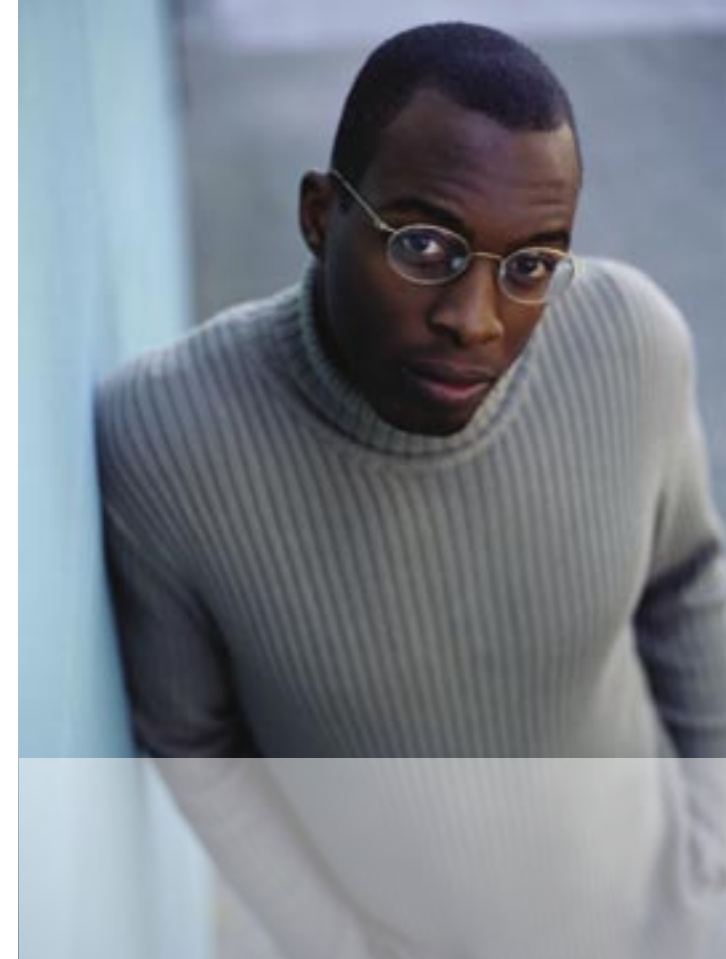
- Completion of an Associate of Art (AA) or Associate of Science (AS) degree (minimum of 60 semester credits with at least 36 credits of general education coursework)
- Cumulative grade point average (GPA) of 2.50 or greater

For more information

For more information, or to be connected with a counselor at the participating four year institutions, please contact Jennifer Lock or Addie Morrow in the Counseling Services Department at Lansing Community College, **(517) 483-1904**.



1130 - Counseling Services
Lansing Community College
PO Box 40010
Lansing, MI 48901-7210



National Articulation and Transfer Network (NATN)



National Articulation and Transfer Network

The National Articulation and Transfer Network is a nationwide partnership of urban high schools, community colleges, and culturally-enriched four-year colleges and universities. NATN partners are working together to provide traditionally underserved student populations with a smooth transition to access Historically Black Colleges and Universities (HBCUs), Hispanic Serving Institutions (HSIs), and Tribal Colleges and Universities (TCUs). The articulation agreements created by NATN intend to increase the representation of traditionally underrepresented students throughout higher education. The NATN partner institutions are accessible to all students regardless of race or ethnicity.

NATN

Vision/Mission

The goal of NATN is to enhance the pathways into higher education that promote both aspiration and achievement for students. The National Articulation and Transfer Network (NATN) is committed to:

1. Greater college access for traditionally underrepresented students.
2. Increased retention of and success for traditionally underrepresented students in high schools, community colleges, four-year institutions, and graduate studies.
3. Successful transfers for traditionally underrepresented students between two- and four-year institutions, especially minority-serving institutions.
4. More career exploration and successful decision-making for traditionally underrepresented students

Lansing Community College: NATN Partner

LCC joined the NATN in December 2004 in an effort to increase the number of out-of-state transfer options for all students. Specialized partnerships are being established between LCC and many four-year institutions throughout the country which will allow for the transfer of AA/AS degrees earned at Lansing Community College to participating colleges and universities. Currently, partnerships and online transfer equivalencies are being developed between LCC and the following schools:

- Bowie State University (Bowie, MD)
- Fisk University (Nashville, TN)
- Florida A&M University (Tallahassee, Florida)
- Hampton University (Hampton, VA)
- Howard University (Washington, DC)
- Morgan State University (Baltimore, MD)
- Norfolk State University (Norfolk, VA)
- Tennessee State University (Nashville, TN)
- Xavier University (New Orleans, LA).

